

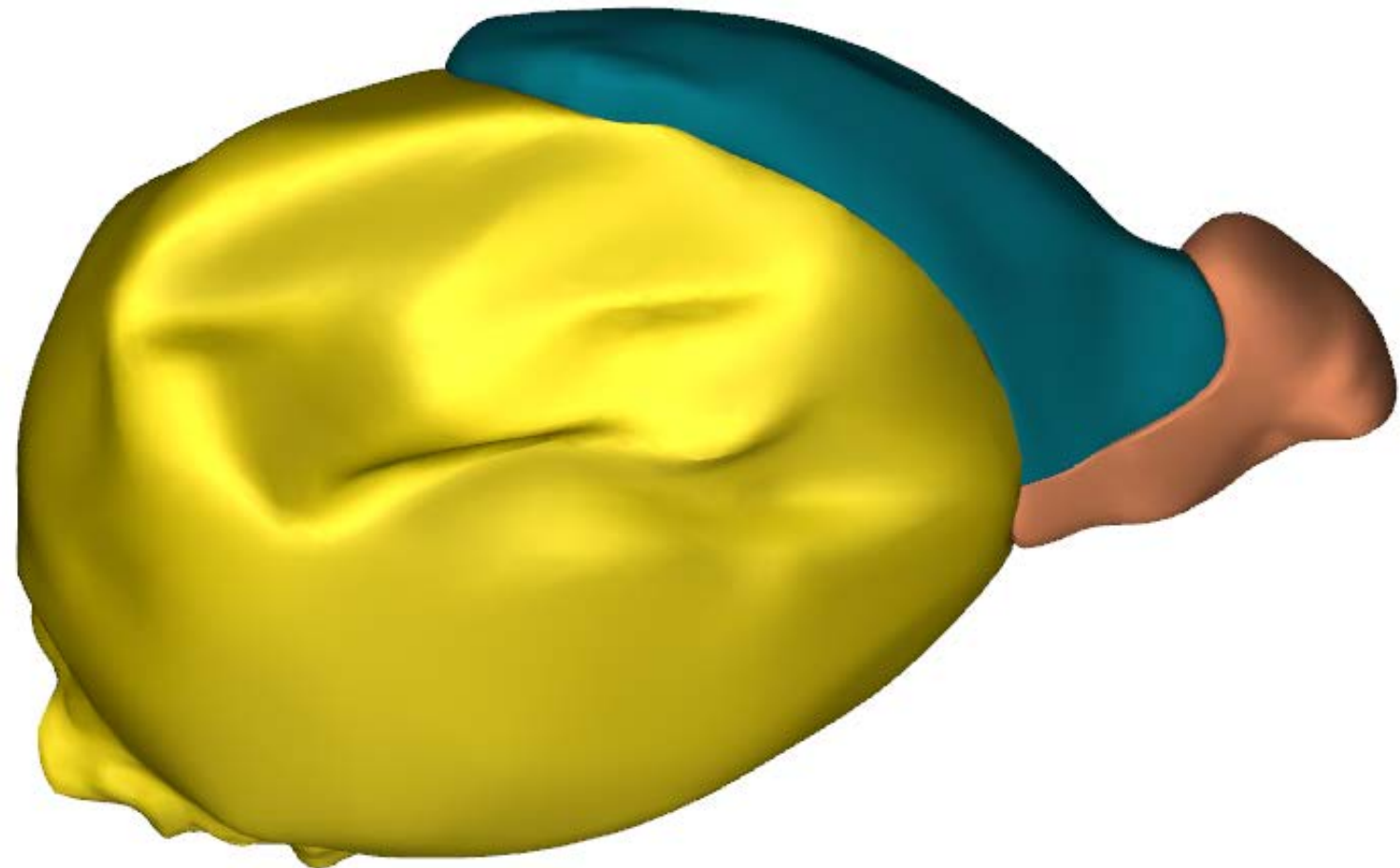
Carnegie stage 8 (17-19 days, 0.61 mm) specimen 8671

- ☐ ☐ ☐ Carnegie stage 8
- ☐ ☐ ☐ Extra-embryonic structures
- ☐ ☐ ☐ Yolk sac
- ☐ ☐ ☐ Amnion
- ☐ ☐ ☐ Connecting stalk
- ☐ ☐ ☐ Allantois
- ☐ ☐ ☐ Intra-embryonic structures
- ☐ ☐ ☐ Epiblast or ectoderm
- ☐ ☐ ☐ Endoderm
- ☐ ☐ ☐ Intra-embryonic mesoderm
- ☐ ☐ ☐ Primitive streak
- ☐ ☐ ☐ Notochordal process

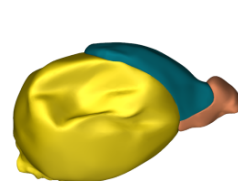
Selected structure:



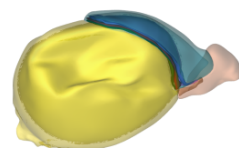
< Click to activate 3D >



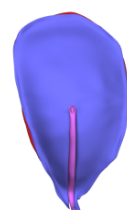
3D interaction is possible on MS Windows or Mac OS systems, using Adobe Acrobat or Acrobat Reader.



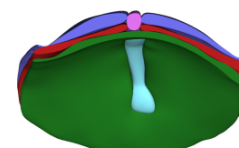
Overview



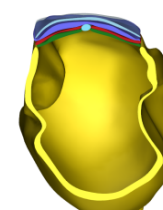
Overview 2



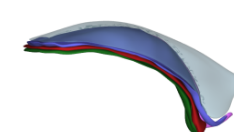
Embryonic disc



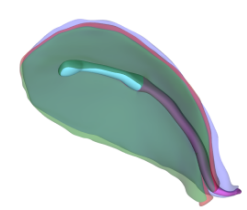
Transverse sct.



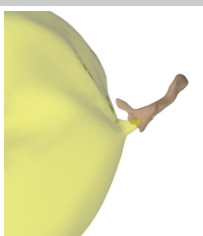
Transverse sct. 2



Amniotic cavity

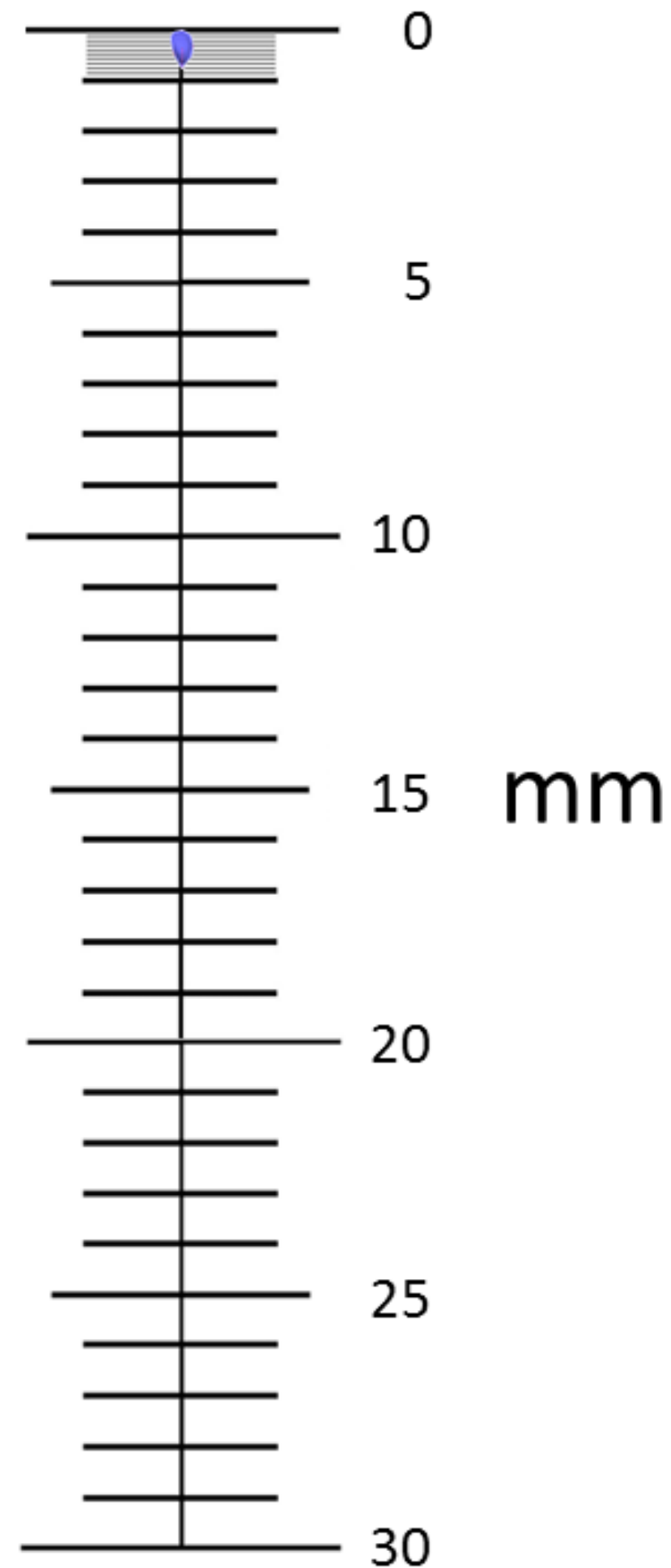
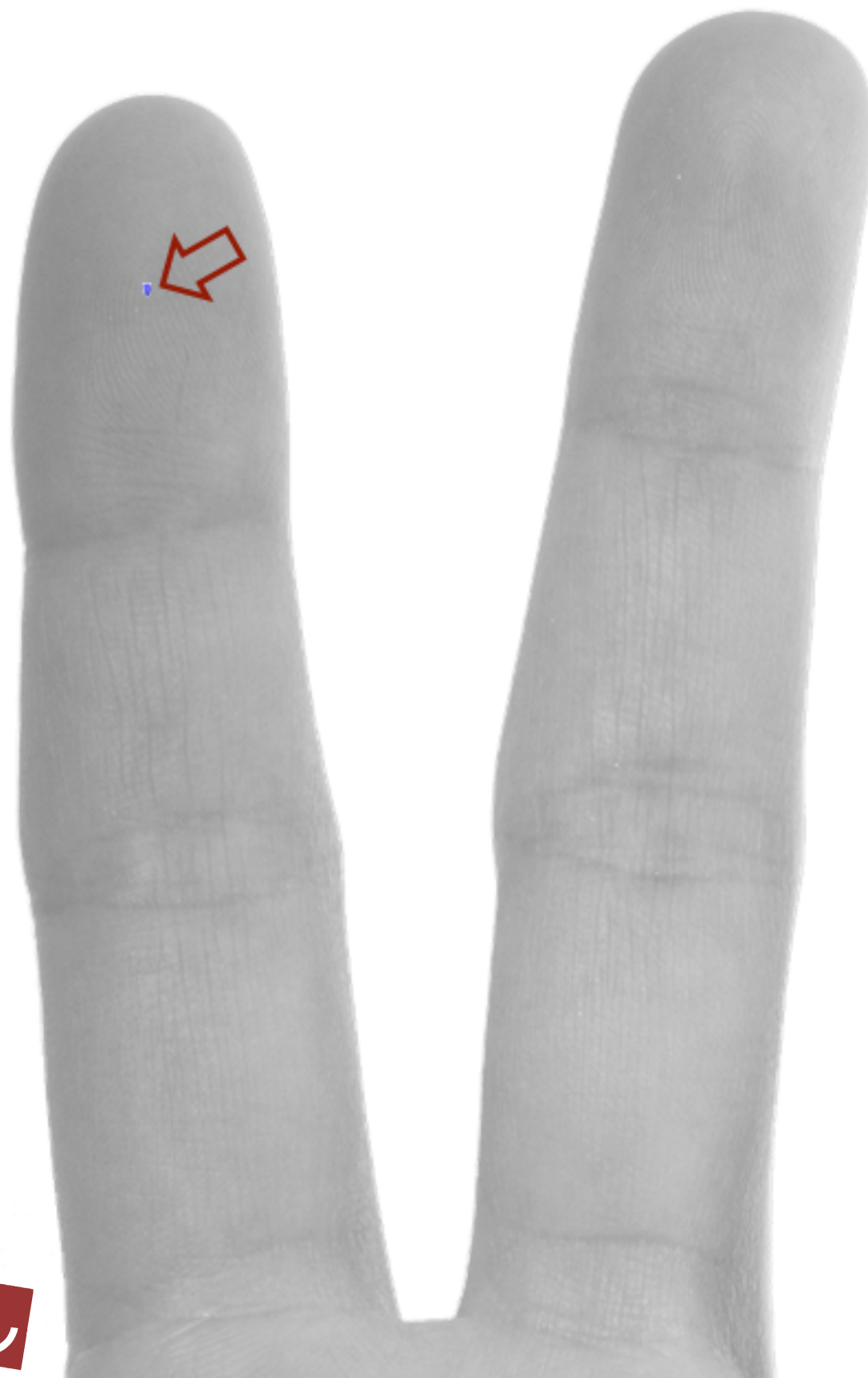
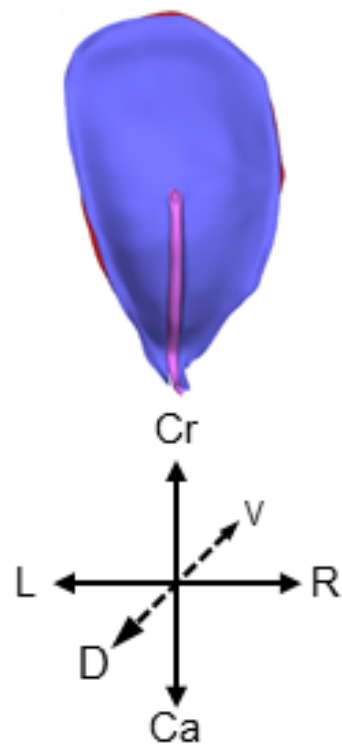


Notochordal process

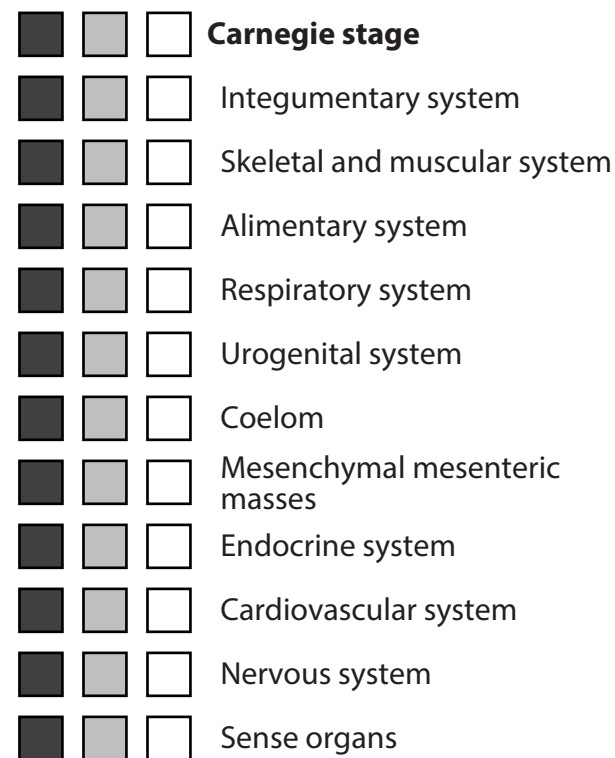


Allantois

Carnegie stage 8 (17-19 days, 0.61 mm) specimen 8671: Actual size



Information on the use of this interactive 3D-PDF

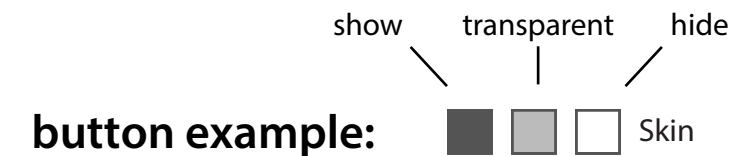


Selected structure:



Selection of structures

The top left panel contains buttons to show or hide groups of structures, or to make them transparent.



After a single click on a 3D structure, the structure will be highlighted and the name of the structure will appear below "Selected structure". Note that this function is disabled in Cross Section views (sct.). With the buttons next to the structure name, the appearance of this structure can be changed. Clicking next to the 3D object will deselect the structure.

For more advanced selection options, right-click on the 3D model and choose: "Show Model Tree".

Interaction with the 3D model

Rotate: Hold left mouse-button and move mouse.

Zoom: Hold right mouse-button and move mouse up or down.

Translate: Hold left and right mouse-buttons and move mouse.

Selection of preset views

Click on a view button to display the preset view as shown on the button.

Full screen mode

Enter full screen mode: **Ctrl +L**

Exit full screen mode: **Esc**

Link to our website

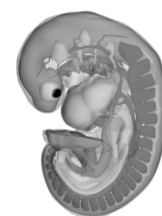
Click on the link to visit our website.

Technical Notes

This PDF file should be viewed in Adobe Acrobat Reader X or higher, available from <http://www.adobe.com/downloads>. 3D interaction is only possible on MS Windows or Mac OS. Javascript and playing of 3D content must be enabled.

Open *Edit* ⇨ *Preferences* to ensure the following:

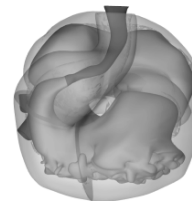
- 1) In *3D & Multimedia*, enable *Enable playing of 3D content*
- 2) In *3D & Multimedia*, under *3D Tool Options*
 - for *Open Model Tree on 3D Activation* choose *Use Annotation's Settings*
 - for *Default Toolbar State* choose *Use Annotation's Settings*
 - disable *Show 3D Orientation Axis*
- 3) In *3D & Multimedia*, under *Auto-Degrade Options*
 - for *Optimization Scheme for Low Framerate* select *None*
- 4) In *JavaScript*, under *JavaScript*
 - enable *Enable Acrobat JavaScript*



Overview



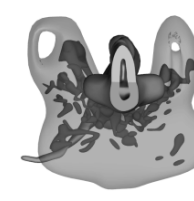
Cardiovascular



Heart



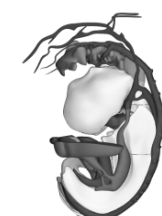
Endodermal derivatives



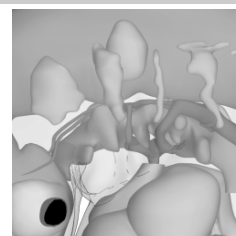
Respiratory bud



Ventral & dorsal pancreas



Coelom



Pharyngeal arches